



MICROSCOPE SLIDE ACCESSORIES

CARDBOARD MAILERS

With lid & dividers
Suitable for 25x75mm Microscope Slides

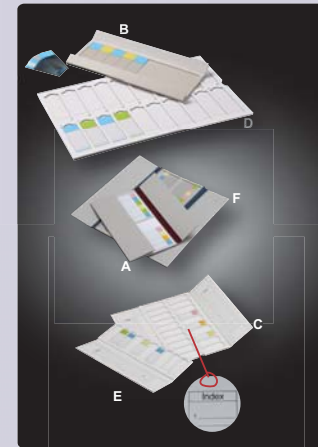
P/N	CAT.NO	PLACE	PACKING
0500-8001	60001001	1	50pcs/inner box, 20 x 50pcs/carton
0500-8002	60001002	2	50pcs/inner box, 10 x 50pcs/carton
0500-8003	60001003	3	50pcs/inner box, 10 x 50pcs/carton
0500-8004	60001004	4	50pcs/inner box, 4 x 50pcs/carton



CARDBOARD TRAYS & WALLETS

Suitable for 25x75mm Microscope Slides

	P/N	CAT.NO	PLACE	DIVIDER	LID
(A)	0500-7009	60001009	9		
(B)	0500-7020	60001021	20	✓	✓
(C)	0500-8024	60001024	24		✓
(D)	0500-8032	60001032	32		✓
(E)	0500-8010	60001010	10	✓	✓
(F)	0500-8020	60001020	20	✓	

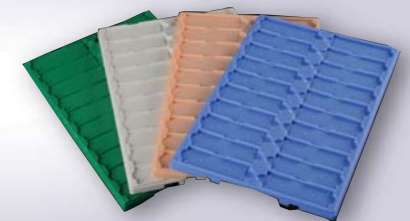


- (A) 10pcs/inner box, 25x10pcs/carton
- (B) 10pcs/inner box, 10x10pcs/carton
- (C) 5pcs/inner box, 10x5pcs/carton
- (D) 5pcs/inner box, 10x5pcs/carton
- (E) 5pcs/inner box, 10x5pcs/carton
- (F) 5pcs/inner box, 10x5pcs/carton

PLASTIC SLIDE TRAYS

PS material
Suitable for 25x75mm Microscope Slides
1pc/polybag, 50x1pc/carton

P/N	CAT.NO	PLACE	COLOR
0500-5020-16	31013020W	20	White
0500-5020-08	31013020G	20	Green
0500-5020-12	31013020P	20	Pink
0500-5020-02	31013020B	20	Blue



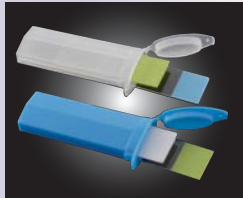
MICROSCOPE SLIDE ACCESSORIES

SLIDE MAILER, PP MATERIAL



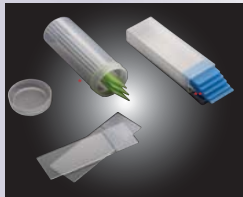
Suitable for 25x75mm slides, neutral color

P/N	CAT.NO	DESCRIPTION	PACKING
0500-1001	31011001MA	For 1 piece of slide	200pcs/dispenser box, 10x200pcs/carton
0500-2002	31011002MA	For 2 pieces of slides	100pcs/dispenser box, 10x100pcs/carton
0500-1003	31011003MA	For 3 pieces of slides	100pcs/dispenser box, 10x100pcs/carton



Vertical type, PP material

P/N	CAT.NO	DESCRIPTION	COLOR	PACKING
0500-1002-02	31011102BB	For 2 pieces of slides	Blue	100pcs/dispenser box, 10x100pcs/carton
0500-1002	31011102BN	For 2 pieces of slides	Neutral	100pcs/dispenser box, 10x100pcs/carton



Suitable for 25x75mm slides, PP material

P/N	CAT.NO	DESCRIPTION	PACKING
0500-2003	31011103MB	Slide mailer container with screw cap, for 3 pieces of slides, caps mounted	100pcs/polybag, 5x100pcs/carton
0500-1005	31011005MA	Slide mailer for 5 pieces of slides	100pcs/dispenser box, 10x100pcs/carton

SLIDE DISPENSER ABS MATERIAL

Constructed by white ABS material, with transparent cover in PS material

Suitable for 25x75mm slides
1each/inner box, 20each/carton

P/N	CAT. NO.	DESCRIPTION
0500-4072	31011000MG	Hold up to 72 pieces of microscope slides



MICROSCOPE SLIDE ACCESSORIES

SLIDE STORAGE BOX PLASTIC

ABS material

All storage boxes are mounted with cock steel on the bottom and index list inside the lid

Suitable for 25x75mm slides

- 12 PLACES

P/N	CAT. NO.	COLOR
0500-3012-07	31012012AG	Grey
0500-3012-10	31012012AO	Orange
0500-3012-02	31012012AB	Blue
0500-3012-13	31012012AR	Red
0500-3012-16	31012012AW	White
0500-3013-07	31012012AM	Metallic grey

- 25 PLACES

P/N	CAT. NO.	COLOR
0500-3025-07	31012025AG	Grey
0500-3025-10	31012025AO	Orange
0500-3025-02	31012025AB	Blue
0500-3025-13	31012025AR	Red
0500-3025-16	31012025AW	White
0500-3026-07	31012025AM	Metallic grey

- 50 PLACES

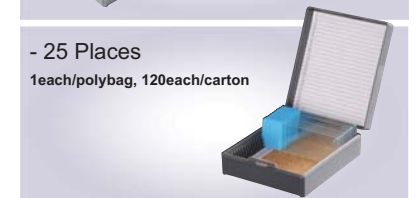
P/N	CAT. NO.	COLOR
0500-3050-07	31012050AG	Grey
0500-3050-10	31012050AO	Orange
0500-3050-02	31012050AB	Blue
0500-3050-13	31012050AR	Red
0500-3050-16	31012050AW	White
0500-3051-07	31012050AM	Metallic grey

- 100 PLACES

P/N	CAT. NO.	COLOR
0500-3100-07	31012100AG	Grey
0500-3100-10	31012100AO	Orange
0500-3100-02	31012100AB	Blue
0500-3100-13	31012100AR	Red
0500-3100-16	31012100AW	White
0500-3101-07	31012100AM	Metallic grey

- 100 PLACES (WITH STAINLESS STEEL LOCK)

P/N	CAT. NO.	COLOR
0500-4100-07	31012100BG	Grey
0500-4100-10	31012100BO	Orange
0500-4100-02	31012100BB	Blue
0500-4100-13	31012100BR	Red
0500-4100-16	31012100BW	White
0500-4101-07	31012100BM	Metallic grey

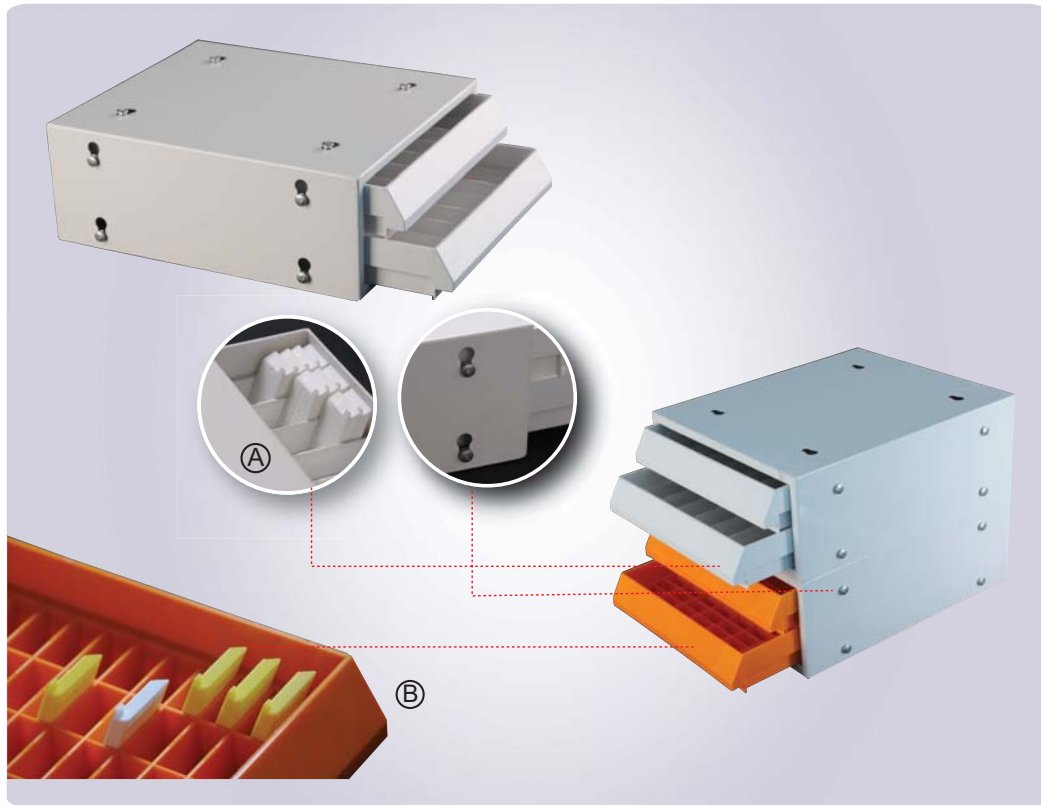


STORAGE CABINET

-TABLE-TOP PARAFFIN BLOCK

P/N.	CAT. NO.	DESCRIPTION
Ⓐ 0510-0001-16	51040600	Each drawer can accommodate up to 315 cassettes, drawers in white color 1 each/box
Ⓐ 0510-0002-10	51040600A	Each drawer can accommodate up to 315 cassettes, drawers in orange color 1 each/box
Ⓑ 0510-0003-16	51041600	Each drawer structures 126 dividers (7x18 layout), drawers in white color 1 each/box
Ⓑ 0510-0004-10	51041600A	Each drawer structures 126 dividers (7x18 layout), drawers in orange color 1 each/box

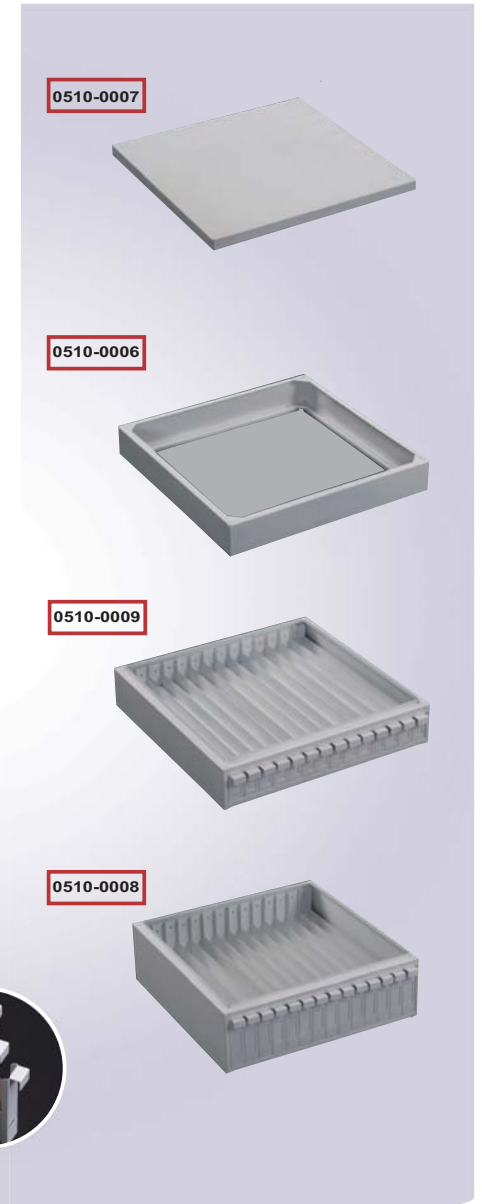
External Dim. 299x252x110mm, contains 2 Drawers cabinet in Iron material with plastic powder coating, drawers in Heavy-duty walled ABS construction



P/N.	CAT. NO.	DESCRIPTION
0510-0006	51040010	Base for pathology/histology slide/ paraffin block storage cabinet. External dimension: 485x480x76mm Iron material, white powder coating. 1 each/box
0510-0007	51040040	Lid for pathology/histology slide/ paraffin block storage cabinet. External dimension: 485x480x29mm Iron material, white powder coating. 1 each/box
0510-0008	51045001	Pathology/histology slide storage cabinet. Stackable/ lockable for safety. Each unit contains 14 drawers, each drawer accommodates approx. 400 slides. External dimension: 485x480x126mm, Iron material, white powder coating. 1 each/box
0510-0009	51040801	Pathology/histology paraffin block storage cabinet. Stackable/lockable for safety, 14 drawers/unit, each drawer accommodates approx. 65 paraffin blocks. Total cap. Approx. 900 blocks. Ext. Dim. 485x480x91mm Iron material, white powder coating. 1 each/box
0510-0005	51040042	Megalev slide/cassette stopper, stainless steel material; An optional part of pathology slide & block storage cabinets for keeping the slides or blocks in upright position in drawer 10ea./polybag, 10x10ea./box

STORAGE CABINET

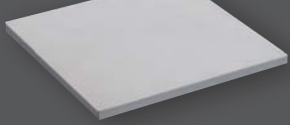
- THE BASPATH SERIES



STORAGE CABINET - THE BASPATH-N SERIES

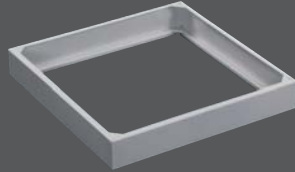
Compared with the BASPATH series Storage Cabinets, the BASPATH-N series Storage Cabinets are just different in External coating. The orange-skin coated BASPATH-N series Storage Cabinets demonstrate an Elegant phenomena.

0510-0024



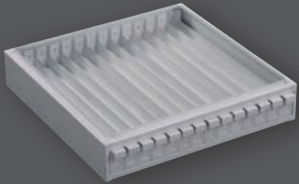
• Deckable with the PROPATH series

0510-0023



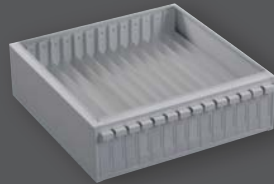
• Deckable with the PROPATH series

0510-0022



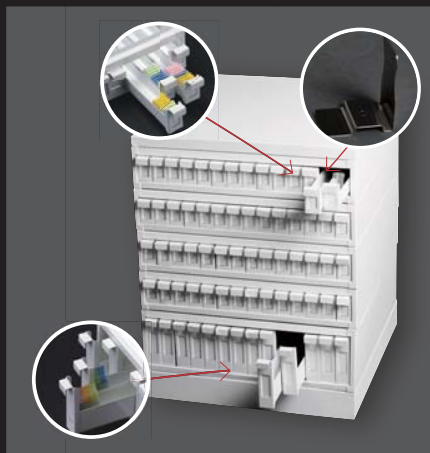
• Deckable with the PROPATH series

0510-0021



• Deckable with the PROPATH series

P/N	DESCRIPTION
0510-0023	Base for pathology/histology slide/paraffin block storage cabinet. External dimension: 485x480x76mm. Iron material, orange-skin coated. 1 each/box
0510-0024	Lid for pathology/histology slide/paraffin block storage cabinet. External dimension: 485x480x26mm. Iron material, orange-skin coated. 1 each/box
0510-0021	Pathology/histology slide storage cabinet. Stackable/lockable for safety. Each unit contains 14 drawers, each drawer accommodates approx. 400 slides, total capacity approx. 5600 slides. External dimension: 485x480x126mm. Iron material, orange-skin coated. 1 each/box
0510-0022	Pathology/histology paraffin block storage cabinet. Stackable/lockable for safety. 14 drawers/unit, each drawer accommodates approx. 65 paraffin blocks. Total cap. Approx. 900 blocks. Ext. Dim. 485x480x91mm. Iron material, orange-skin coated. 1 each/box
0510-0005	Megalev slide/cassette stopper, stainless steel material; An optional part of pathology slide & block storage cabinets for keeping the slides or blocks in upright position in drawer. 10ea./polybag, 10x10ea./box



STORAGE CABINET - THE PROPATH SERIES

• Deckable with the BASPATH-N series

Upon the previous experience of manufacturing and supplying the BASPATH series Storage Cabinets, the PROPATH series Storage Cabinets were designed and created for satisfying more elegant and durable demands. The PROPATH series Storage Cabinets feature the following characteristics and are provided with in the related illustrated forms

PROPATH - \$14400 - Storage Cabinets for Microscope Slides

3 Layers

- Overall external dimension: L485xW480xH435mm
- Each unit consists of 9 drawers (3*3), and each drawer contains 4 individual slots that are reinforced by delicate spot welding for achieving durable use
- Cap. 400 slides/slot, 1,600slides/drawer, 14,400 slides/unit
- Each unit has convex top and concave bottom (except lid and base), stackable
- Smooth camber corners avoid the risk of injury
- Orange-skin powder coated, chemical resistant
- Each drawer are equipped with large hand-shaped handle in the front and rails at the bottom, and constructed with 60mm deep surrounding strips for realizing easy and safe drawings
- Preserved grooves in front of each slot accommodate long I.D labels that are supplied with the unit but not installed.
- Optional maglev stoppers can be chosen to prevent samples from falling down



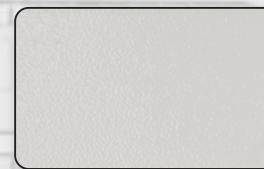
PROPATH - \$14400

PROPATH - \$9600 - For slides storage cabinet

- ### 2 Layers
- Overall external dimension: L485xW480xH290mm
 - Each unit consists of 6 drawers (2*3), and each drawer contains 4 individual slots that are reinforced by delicate spot welding for achieving durable use
 - Cap. 400 slides/slot, 1,600slides/drawer, 9,600 slides/unit
 - Each unit has convex top and concave bottom (except lid and base), stackable
 - Smooth camber corners avoid the risk of injury
 - Orange-skin powder coated, chemical resistant
 - Each drawer are equipped with large hand-shaped handle in the front and rails at the bottom, and constructed with 60mm deep surrounding strips for realizing easy and safe drawings
 - Preserved grooves in front of each slot accommodate long I.D labels that are supplied with the unit but not installed.
 - Optional maglev stoppers can be chosen to prevent samples from falling down



PROPATH - \$9600



* Chemical resistant, powder coating finish

STORAGE CABINET

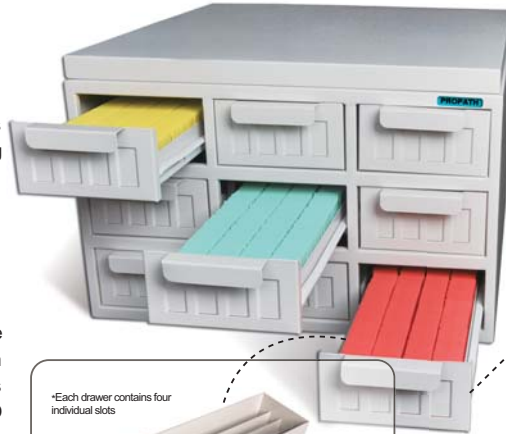
- THE PROPATH SERIES

• Deckable with the BASPATH-N series

PROPATH - B2340

-Storage Cabinets for Paraffin Bolocks 3 layers

- Overall external dimension: L485×W480×H290mm
- Each unit consists of 9 drawers (3*3), and each drawer contains 4 individual slots that are reinforced by delicate spot welding for achieving durable use
- Cap. 65 blocks/slot, 260 blocks/drawer, 2,340 blocks/unit
- Each unit has convex top and concave bottom (except lid and base), stackable
- Smooth camber corners avoid the risk of injury
- Orange-skin powder coated, chemical resistant
- Each drawer are equipped with large hand-shaped handle in the front and rails at the bottom, and constructed with 60mm deep surrounding strips for realizing easy and safe drawings
- Preserved grooves in front of each slot accommodate long I.D labels that are supplied with the unit but not installed.
- Optional maglev stoppers can be chosen to prevent samples from falling down



*Each drawer contains four individual slots



*The individual slots are reinforced by delicate spot welding for achieving durable use



PROPATH - HR

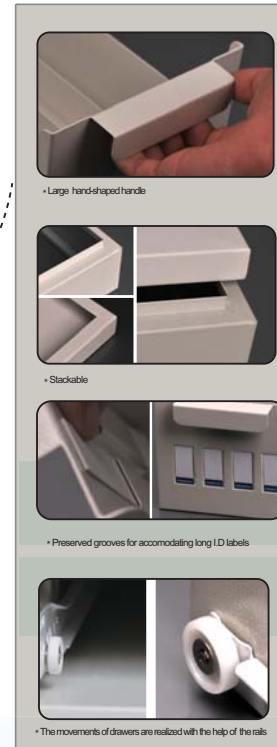
- Carts for more convenient transfers of Storage Cabinets
- Suitable for all the PROPATH series Storage Cabinets
- Equipped with four lockable casters
- External Dimension: L485mm xW480mm x H292mm
- Orange-skin powder coated, chemical resistant

PROPATH - SR

- Carts for more convenient transfers of Storage Cabinets
- Suitable for all the PROPATH series Storage Cabinets
- Equipped with four lockable casters
- External Dimension: L485mm xW480mm x H146mm
- Orange-skin powder coated, chemical resistant



-Lockable casters



• Large hand-shaped handles

• Stackable

• Preserved grooves for accommodating long I.D labels

• The movements of drawers are realized with the help of the rails

STORAGE CABINET

- THE PROPATH SERIES

• Deckable with the BASPATH-N series

0510-0025 -Cork pad

Made of cork material for ensuring safe use
Dimension: 25mm x470mm, 1.1mm thickness



0510-0025

Identification card

0510-0026 (FOR "S" SERIES)

Material: ivory card, Dimension:18mm x 65mm

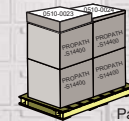
0510-0027(FOR "B" SERIES)

Material: ivory card, Dimension:18mm x 55mm

-Order Information

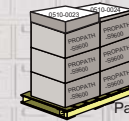
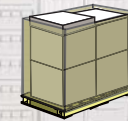
P/N	Content
0510-1001	1× #0510-0023 1× #0510-0024 4× PROPATH-S14400
0510-1002	1× #0510-0023 1× #0510-0024 6× PROPATH-S9600
0510-1003	1× #0510-0023 1× #0510-0024 6× PROPATH-B2340

Packing

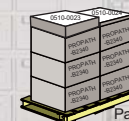
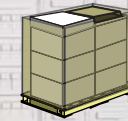


Pallet

Packing



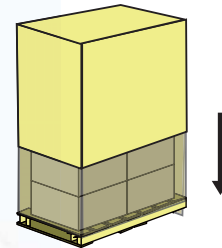
Pallet



Pallet




All the assembled ordering units have same heights



SLIDE STAINING JAR, GLASS

Suitable for 25x75mm slides



Hellendhal type **Coplin type**

P/N	CAT. NO.	DESCRIPTION
A 0410-0000	10130505	5-PC Glass Staining Jar With Glass Lid, Coplin type
B 0410-0001	10130609	9-PC Glass Staining Jar With Glass Lid, Hellendhal type

1pc/inner box, 20ea./carton



Schifferdecker type

P/N	CAT. NO.	DESCRIPTION
0410-0002	10130510	10-pc glass staining jar with glass lid, Schifferdecker type

1pc/inner box, 50ea./carton



P/N	CAT. NO.	DESCRIPTION
0410-0003	10130530	30-pc glass staining jar with ground-in glass lid

Suitable for #0420-0002 staining racks
Rack not included
1pc/inner box, 20ea./carton



P/N	CAT. NO.	DESCRIPTION
0410-0005	10130560	60-pc glass staining jar with ground-in glass lid

Suitable for #0420-0003 staining racks
rack not included
1pc/inner box, 10ea./carton

SLIDE STAINING JAR, GLASS

PAPANICOLAU

Suitable for 25x75mm slides

P/N	CAT. NO.	DESCRIPTION
0410-0004	10130520	20-pc glass staining jar with glass lid, papanicolau type

Suitable for #0420-0001 staining racks
Rack not included
1pc/inner box, 20ea./carton



SLIDE STAINING RACKS, STAINLESS STEEL

PAPANICOLAU

Suitable for 25x75mm slides

P/N	CAT. NO.	DESCRIPTION
A 0420-0002	50101630	30-pc staining rack, stainless steel

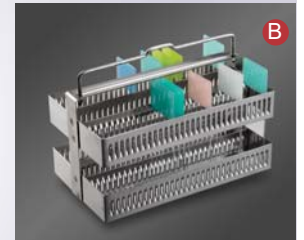
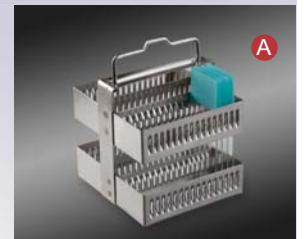
Suitable for #0410-0003 staining jar
1pc/inner box, 50ea./carton

P/N	CAT. NO.	DESCRIPTION
B 0420-0003	50101660	60-pc staining rack, stainless steel

Suitable for #0410-0005 staining jar
1pc/inner box, 50ea./carton

P/N	CAT. NO.	DESCRIPTION
C 0420-0001	50101620	20-pc staining rack, papanicolau type, stainless steel

Suitable for #0410-0004 staining jar
1pc/inner box, 50ea./carton



EMBEDDING CASSETTES



Thanks to the precious experience of working together with our professional partners in the field as well as the persistent teamwork inside, CITOTEST is now supplying many models of Processing (Embedding) Cassettes and most of the models can be used with different automated labeling instruments



EMBEDDING CASSETTES

HISTOLOGY-STRIP HOLES



* Cassette&Lid Unassembled

TypeC:500cassettes/dispenser box+500lids/dispenser box, 1,000cassettes +1,000 lids/carton

P/N	CAT.NO.	COLOR
0100-1106-16	31050107W	White
0100-1106-17	31050107Y	Yellow
0100-1106-08	31050107G	Green
0100-1106-12	31050107P	Pink
0100-1106-02	31050107B	Blue
0100-1106-15	31050107T	Tan
0100-1106-09	31050107M	Purple
0100-1106-11	31050107N	Peach
0100-1106-10	31050107O	Orange
0100-1106-00	31050107A	Aqua

TypeA:250pcs/dispenser box,8x250pcs/carton

P/N	CAT.NO.	COLOR
0106-1106-16	31052107W	White
0106-1106-17	31052107Y	Yellow
0106-1106-08	31052107G	Green
0106-1106-12	31052107P	Pink
0106-1106-02	31052107B	Blue
0106-1106-15	31052107T	Tan
0106-1106-09	31052107M	Purple
0106-1106-11	31052107N	Peach
0106-1106-10	31052107O	Orange
0106-1106-00	31052107A	Aqua

* Cassette&Lid Assembled

TypeB:500pcs/dispenser box, 2,000pcs/carton

P/N	CAT.NO.	COLOR
0100-1107-16	31051107W	White
0100-1107-17	31051107Y	Yellow
0100-1107-08	31051107G	Green
0100-1107-12	31051107P	Pink
0100-1107-02	31051107B	Blue
0100-1107-15	31051107T	Tan
0100-1107-09	31051107M	Purple
0100-1107-11	31051107N	Peach
0100-1107-10	31051107O	Orange
0100-1107-00	31051107A	Aqua

BIOPSY-SQUARE HOLES



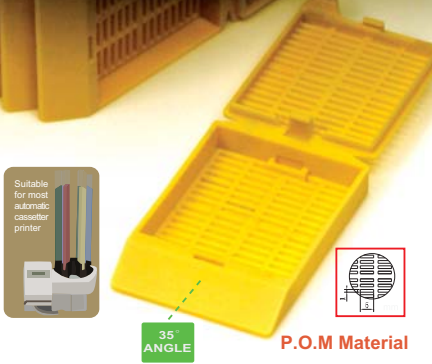
P.O.M Material

250pcs/dispenser box, 8x250pcs/carton

P/N	CAT.NO.	COLOR
0107-1100-16	31050101W	White
0107-1100-17	31050101Y	Yellow
0107-1100-08	31050101G	Green
0107-1100-12	31050101P	Pink
0107-1100-02	31050101B	Blue
0107-1100-15	31050101T	Tan
0107-1100-09	31050101M	Purple
0107-1100-11	31050101N	Peach
0107-1100-10	31050101O	Orange
0107-1100-00	31050101A	Aqua

EMBEDDING CASSETTES

HISTOLOGY-STRIP HOLES



* Cassette&Lid Unassembled
 TypeC:500cassettes/dispenser box+500lids/dispenser box,
 1,000cassettes +1,000 lids/carton

P/N	COLOR
0106-1113-16	White
0106-1113-17	Yellow
0106-1113-08	Green
0106-1113-12	Pink
0106-1113-02	Blue
0106-1113-15	Tan
0106-1113-09	Purple
0106-111311	Peach
0106-1113-10	Orange
0106-1113-00	Aqua

HISTOLOGY-STRIP HOLES



P.O.M Material

TypeA:250pcs/dispenser box, 8x250pcs/carton

P/N	COLOR
0106-1112-16	White
0106-1112-17	Yellow
0106-1112-08	Green
0106-1112-12	Pink
0106-1112-02	Blue
0106-1112-15	Tan
0106-1112-09	Purple
0106-1112-11	Peach
0106-1112-10	Orange
0106-1112-00	Aqua

* Cassette&Lid Assembled
 TypeB:500pcs/dispenser box, 2,000pcs/carton

P/N	COLOR
0106-1114-16	White
0106-1114-17	Yellow
0106-1114-08	Green
0106-1114-12	Pink
0106-1114-02	Blue
0106-1114-15	Tan
0106-1114-09	Purple
0106-111411	Peach
0106-1114-10	Orange
0106-1114-00	Aqua

250pcs/dispenser box, 8x250pcs/carton

P/N	CAT.NO.	COLOR
0106-1100-16	31050102W	White
0106-1100-17	31050102Y	Yellow
0106-1100-08	31050102G	Green
0106-1100-12	31050102P	Pink
0106-1100-02	31050102B	Blue
0106-1100-15	31050102T	Tan
0106-1100-09	31050102M	Purple
0106-1100-11	31050102N	Peach
0106-1100-10	31050102O	Orange
0106-1100-00	31050102A	Aqua

250pcs/dispenser box, 8x250pcs/carton

P/N	CAT.NO.	COLOR
0109-1100-16	31050104W	White
0109-1100-17	31050104Y	Yellow
0109-1100-08	31050104G	Green
0109-1100-12	31050104P	Pink
0109-1100-02	31050104B	Blue
0109-1100-15	31050104T	Tan
0109-1100-09	31050104M	Purple
0109-1100-11	31050104N	Peach
0109-1100-10	31050104O	Orange
0109-1100-00	31050104A	Aqua



P.O.M Material

* Cassette&Lid Unassembled
 500cassettes/dispenser box+500lids/dispenser box,
 2,000cassettes +2,000 lids/carton

P/N	CAT.NO.	COLOR
0100-1100-16	31050106W	White
0100-1100-17	31050106Y	Yellow
0100-1100-08	31050106G	Green
0100-1100-12	31050106P	Pink
0100-1100-02	31050106B	Blue
0100-1100-15	31050106T	Tan
0100-1100-09	31050106M	Purple
0100-1100-11	31050106N	Peach
0100-1100-10	31050106O	Orange
0100-1100-00	31050106A	Aqua

EMBEDDING CASSETTES

BIOPSY-FINE SQUARE HOLES



P.O.M Material

HISTOLOGY-STRIP HOLES



* Cassette&Lid Assembled
 500pcs/dispenser box, 4x500pcs/carton

P/N	CAT.NO.	COLOR
0100-1102-16	31051106W	White
0100-1102-17	31051106Y	Yellow
0100-1102-08	31051106G	Green
0100-1102-12	31051106P	Pink
0100-1102-02	31051106B	Blue
0100-1102-15	31051106T	Tan
0100-1102-09	31051106M	Purple
0100-1102-11	31051106N	Peach
0100-1102-10	31051106O	Orange
0100-1102-00	31051106A	Aqua

EMBEDDING CASSETTES

BIOPSY-FINE SQUARE HOLES



45° ANGLE



P.O.M Material



* Cassette&Lid Unassembled

500cassettes/dispenser box+500lids/dispenser box,
2,000cassettes +2,000 lids/carton

P/N	CAT.NO.	COLOR
0103-1100-16	31050105W	White
0103-1100-17	31050105Y	Yellow
0103-1100-08	31050105G	Green
0103-1100-12	31050105P	Pink
0103-1100-02	31050105B	Blue
0103-1100-15	31050105T	Tan
0103-1100-09	31050105M	Purple
0103-1100-11	31050105N	Peach
0103-1100-10	31050105O	Orange
0103-1100-00	31050105A	Aqua

HISTOLOGY-STRIP HOLES



45° ANGLE



P.O.M Material



* Cassette&Lid Assembled

500pcs/dispenser box, 4x500pcs/carton

P/N	CAT.NO.	COLOR
0103-1102-16	31051105W	White
0103-1102-17	31051105Y	Yellow
0103-1102-08	31051105G	Green
0103-1102-12	31051105P	Pink
0103-1102-02	31051105B	Blue
0103-1102-15	31051105T	Tan
0103-1102-09	31051105M	Purple
0103-1102-11	31051105N	Peach
0103-1102-10	31051105O	Orange
0103-1102-00	31051105A	Aqua

500pcs/dispenser box, 4x500pcs/carton

P/N	CAT.NO.	COLOR
0100-1101-16	31050110W	White
0100-1101-17	31050110Y	Yellow
0100-1101-08	31050110G	Green
0100-1101-12	31050110P	Pink
0100-1101-02	31050110B	Blue
0100-1101-15	31050110T	Tan
0100-1101-09	31050110M	Purple
0100-1101-11	31050110N	Peach
0100-1101-10	31050110O	Orange
0100-1101-00	31050110A	Aqua

500pcs/dispenser box, 4x500pcs/carton

P/N	CAT.NO.	COLOR
0103-1101-16	31050111W	White
0103-1101-17	31050111Y	Yellow
0103-1101-08	31050111G	Green
0103-1101-12	31050111P	Pink
0103-1101-02	31050111B	Blue
0103-1101-15	31050111T	Tan
0103-1101-09	31050111M	Purple
0103-1101-11	31050111N	Peach
0103-1101-10	31050111O	Orange
0103-1101-00	31050111A	Aqua

HISTOLOGY-STRIP HOLES



P.O.M Material



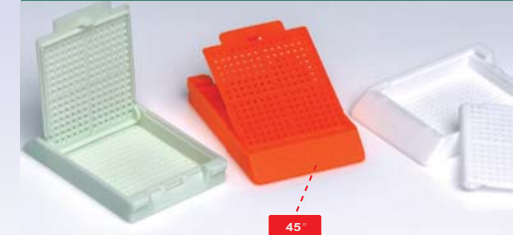
45° ANGLE

500pcs/dispenser box, 4x500pcs/carton

P/N	COLOR
0100-1115-16	White
0100-1115-17	Yellow
0100-1115-08	Green
0100-1115-12	Pink
0100-1115-02	Blue
0100-1115-15	Tan
0100-1115-09	Purple
0100-1115-11	Peach
0100-1115-10	Orange
0100-1115-00	Aqua

EMBEDDING CASSETTES

BIOPSY-FINE SQUARE HOLES



45° ANGLE



P.O.M Material



HISTOLOGY-STRIP HOLES



45° ANGLE



P.O.M Material

500pcs/dispenser box, 4x500pcs/carton

P/N	CAT.NO.	COLOR
0100-1400-16	31050112W	White
0100-1400-17	31050112Y	Yellow
0100-1400-08	31050112G	Green
0100-1400-12	31050112P	Pink
0100-1400-02	31050112B	Blue
0100-1400-15	31050112T	Tan
0100-1400-09	31050112M	Purple
0100-1400-11	31050112N	Peach
0100-1400-10	31050112O	Orange
0100-1400-00	31050112A	Aqua

EMBEDDING CASSETTES

BIOPSY-FINE SQUARE HOLES

500 lids/dispenser box
75 cassettes x 40 tubings + 500lids x 6/carton

P/N	CAT.NO.	COLOR
0103-1103-16	31050185W	White
0103-1103-17	31050185Y	Yellow
0103-1103-08	31050185G	Green
0103-1103-12	31050185P	Pink
0103-1103-02	31050185B	Blue
0103-1103-15	31050185T	Tan
0103-1103-09	31050185M	Purple
0103-1103-11	31050185N	Peach
0103-1103-10	31050185O	Orange
0103-1103-00	31050185A	Aqua

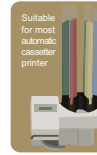


45° ANGLE



P.O.M Material

STANDARD-SQUARE HOLES



45° ANGLE



P.O.M Material

500pcs/dispenser box, 8x500pcs/carton

P/N	CAT.NO.	COLOR
0113-1100-16	31050109W	White
0113-1100-17	31050109Y	Yellow
0113-1100-08	31050109G	Green
0113-1100-12	31050109P	Pink
0113-1100-02	31050109B	Blue
0113-1100-15	31050109T	Tan
0113-1100-09	31050109M	Purple
0113-1100-11	31050109N	Peach
0113-1100-10	31050109O	Orange
0113-1100-00	31050109A	Aqua

EMBEDDING CASSETTES

STANDARD-ROUND HOLES



45° ANGLE

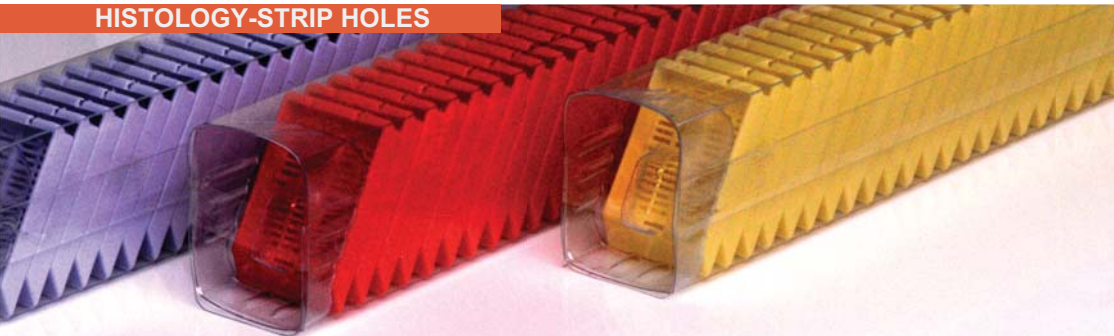


P.O.M Material

500pcs/dispenser box, 8x500pcs/carton

P/N	CAT.NO.	COLOR
0114-1104-16	31050103W	White
0114-1104-17	31050103Y	Yellow
0114-1104-08	31050103G	Green
0114-1104-12	31050103P	Pink
0114-1104-02	31050103B	Blue
0114-1104-15	31050103T	Tan
0114-1104-09	31050103M	Purple
0114-1104-11	31050103N	Peach
0114-1104-10	31050103O	Orange
0114-1104-00	31050103A	Aqua

HISTOLOGY-STRIP HOLES



45° ANGLE



P.O.M Material

500 lids/dispenser box
75 cassettes x 40 tubings + 500lids x 6/carton

P/N	CAT.NO.	COLOR
0100-1103-16	31050186W	White
0100-1103-17	31050186Y	Yellow
0100-1103-08	31050186G	Green
0100-1103-12	31050186P	Pink
0100-1103-02	31050186B	Blue
0100-1103-15	31050186T	Tan
0100-1103-09	31050186M	Purple
0100-1103-11	31050186N	Peach
0100-1103-10	31050186O	Orange
0100-1103-00	31050186A	Aqua

HISTOLOGY-STRIP HOLES



45° ANGLE



P.O.M Material

500pcs/dispenser box, 8x500pcs/carton

P/N	CAT.NO.	COLOR
0112-1100-16	31050108W	White
0112-1100-17	31050108Y	Yellow
0112-1100-08	31050108G	Green
0112-1100-12	31050108P	Pink
0112-1100-02	31050108B	Blue
0112-1100-15	31050108T	Tan
0112-1100-09	31050108M	Purple
0112-1100-11	31050108N	Peach
0112-1100-10	31050108O	Orange
0112-1100-00	31050108A	Aqua

EMBEDDING SPARE "O" RINGS



Disposable,
ABS Material

500pcs/dispenser box, 4x500pcs/carton

P/N	CAT.NO.	COLOR
0260-0000-16	31050201W	White
0260-0000-17	31050201Y	Yellow
0260-0000-08	31050201G	Green
0260-0000-12	31050201P	Pink
0260-0000-02	31050201B	Blue
0260-0000-11	31050201N	Peach
0260-0000-10	31050201O	Orange
0260-0000-00	31050201A	Aqua

EMBEDDING CASSETTES

REUSABLE LIDS FOR STANDARD EMBEDDING CASSETTES

Stainless steel material
Polished

Optional reusable for #0114-1104 & #0112-1100 series standard cassette

10 pcs/pack, 25 x 10 pcs/inner box, 50 x 10 pcs/carton

P/ N	CAT.NO.	DESCRIPTION
0110-0005	51050103	Optional reusable lid for #0114-1104 & #0112-1100 series standard cassette Stainless steel material, Polished

HISTOLOGY TISSUE BASE MOLES REUSABLE

10 pcs/pack, 20 x 10 pcs/inner box, 200 x 10 pcs/carton

Stainless steel material
Polished

P/ N	CAT.NO.	WELL_DIM.(mm) (LxWxH)	EXTERNAL_DIM.(mm) (LxWxH)
0203-0001	51050707	7x7x7	52x35x11
0203-0002	51051515	15x15x7	52x35x11
0203-0003	51052424	24x24x7	52x35x11
0203-0004	51053724	37x24x7	52x35x11
0203-0005	51053024	30x24x7	52x35x11

DEEP WELL

P/ N	WELL_DIM.(mm) (LxWxH)	EXTERNAL_DIM.(mm) (LxWxH)
0203-1001	7x7x9	52x35x11
0203-1002	15x15x9	52x35x11
0203-1003	24x24x9	52x35x11
0203-1004	37x24x9	52x35x11
0203-1005	30x24x9	52x35x11

HISTOLOGY TISSUE BASE MOLES DISPOSABLE

PVC Material

* 500pcs/pack, 10x500pcs/carton
** 50pcs/pack, 10x50pcs/carton

P/ N	CAT.NO.	WELL_DIM.(mm) (LxWxH)	EXTERNAL_DIM.(mm) (LxWxH)
* 0203-0006	31050707	7x7x5	50x37x12
* 0203-0007	31051717	17x17x5	50x37x12
* 0203-0008	31052525	25x25x5	50x37x12
* 0203-0009	31052532	25x32x5	50x37x12
* 0203-0010	31052540	25x40x5	50x37x12
** 0203-0011	31055538M	30x20x12	55x38x18

BIOPSY FOAM PADS

Used to hold biopsies in place and prevent them from being lost during processing, fits all the regular CITOTEST cassettes
1000pcs/pack

P/ N	CAT.NO.	DIMENSION(mm) (LxWxH)
0110-0001	31053000	32x25x2

OPTIONAL DISPENSING CHUTE

- For storing approx. 75 cassettes

Each set contains 1 chute & 2 ea end stops

Chute in pvc material, end stops in pvc material

* 200 chutes / carton, 400 end stops in separate carton
** 200 chutes / carton
*** 400 end stops / carton

P/ N	CAT.NO.	DESCRIPTION
* 0110-0002	3105000	Set of 1 ea.Chute + 2 ea.End stops
** 0110-0003	3105100	Only chute
*** 0110-0004	3105200	Only end stops

CERVICAL BRUSH, DISPOSABLE

CE 0197 MDD

Moulded handle, overall length 200mm



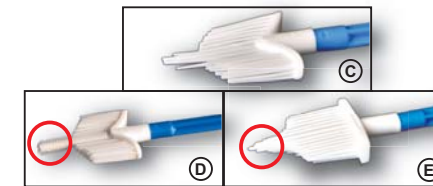
P/ N	CAT.NO.	DESCRIPTION	PACKING
0010-0001	92010000	Bulk pack, non-sterile	100pcs/polybag/inner box, 50x100pcs/carton
0010-0002	92010000DR	Individual peel pack, gamma sterile	100pcs/dispenser box, 20x100pcs/carton
0010-0003	92010000EO	Individual peel pack, e.O. Sterile	100pcs/dispenser box, 20x100pcs/carton

With safety plastic ball-shaped tip, moulder handle, overall length 200mm

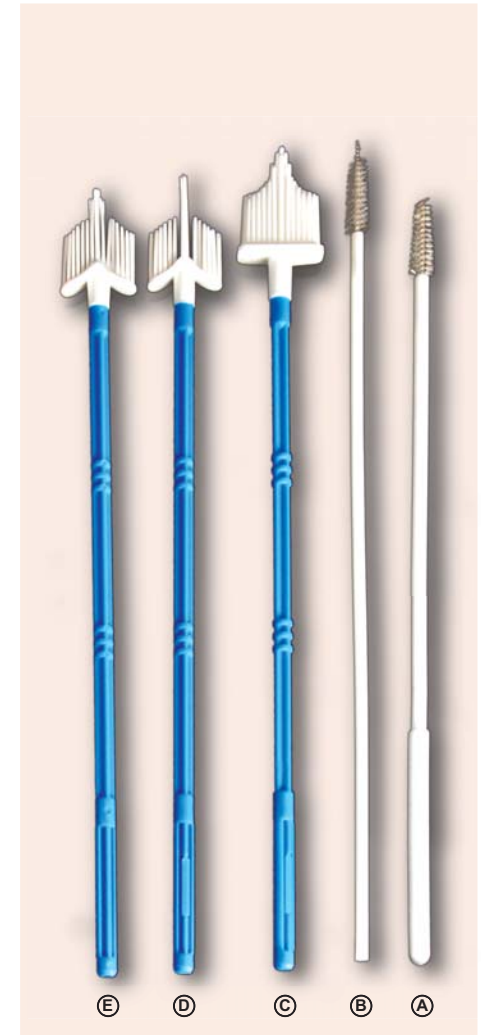


P/ N	CAT.NO.	DESCRIPTION	PACKING
0010-0004	92012000	Bulk pack, non-sterile	100pcs/polybag, 50x100pcs/carton
0010-0005	92012000DR	Individual peel pack, gamma sterile	100pcs/inner box, 20x100pcs/carton
0010-0006	92012000EO	Individual peel pack, e.O. Sterile	100pcs/inner box, 20x100pcs/carton

Broom-shaped head, for endocervical cell sampling
Non-sterile, bulk pack



P/ N	CAT.NO.	DESCRIPTION	PACKING
C 0010-0007	92011000	With convenient removable, head handle in purple color, overall length 200mm	50pcs/polybag, 20x50pcs/carton
D 0010-0008	92013000	With convenient removable, head handle in blue color, overall length 197mm	50pcs/inner box, 20x50pcs/carton
E 0010-0009	92014000	With convenient removable, head handle in blue color, overall length 197mm	50pcs/inner box, 20x50pcs/carton



CERVICAL SCRAPER, WOODEN CE

- AYRES STYLE, NEUTRAL COLOR, 180MM LENGTH

P/N	CAT.NO.	STERILE	PACKING
0012-0001	93021000	Non-sterile	100pcs/box, 50x100pcs/carton
0012-0005	93021000A	EO	Individual flow pack, 100pcs/box, 50x100pcs/carton
0012-0006	93021000B	EO	Individual peel pack, 100pcs/box, 50x100pcs/carton

Smoothly polished white birch Splinter free edges, use for cervical specimen collection and pap smear testing



- DOUBLE-HEAD STYLE, NEUTRAL COLOR, 180MM LENGTH

P/N	CAT.NO.	STERILE	PACKING
A 0012-0002	93022000	Non-sterile	100pcs/ box, 50x100pcs/carton
A 0012-0007	93022000A	EO	Individual flow pack, 100pcs/box, 50x100pcs/carton
A 0012-0008	93022000B	EO	Individual peel pack, 100pcs/box, 50x100pcs/carton
B 0012-0003	93023000	Non-sterile	100pcs/ box, 50x100pcs/carton
B 0012-0009	93023000A	EO	Individual flow pack, 100pcs/box, 50x100pcs/carton
B 0012-0010	93023000B	EO	Individual peel pack, 100pcs/box, 50x100pcs/carton
C 0012-0004	93024000	Non-sterile	100pcs/ box, 50x100pcs/carton
C 0012-0011	93024000A	EO	Individual flow pack, 100pcs/box, 50x100pcs/carton
C 0012-0012	93024000B	EO	Individual peel pack, 100pcs/box, 50x100pcs/carton

Smoothly polished white birch, splinter free edges



A



B



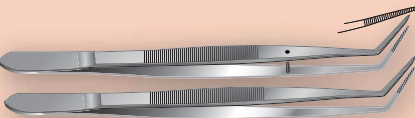
C

FORCEPS

10pcs / pack, 50pcs/ carton

- SERRATED, STAINLESS STEEL, POLISHED

P/N	DESCRIPTION	LENGTH(mm)
0304-2160	with curved medium fine tips and Guide-pined	160
0304-1160	with curved medium fine tips	160



DISPOSABLE MICROTOME BLADES

Made in JAPAN

P/N	CAT.NO.	MATERIAL	PACKING
0390-0001	R35	Stainless steel	
0390-0003	S35	Stainless steel	50pcs/box, 10boxes/inner box
0390-0002	A35	Stainless steel	
0390-0004	N35	Stainless steel	



VAGINAL SPECULUM CE

E.O. STERILE

PS material

- SIDE SCREW

P/N	TYPE	PACKING
6900-1031	Large	Individual flow-pack, 100 pcs/carton
6900-1021	Middle	
6900-1011	Small	
6900-1032	Large	Individual peel-pack, 100 pcs/carton
6900-1022	Middle	
6900-1012	Small	



- MIDDLE SCREW

P/N	TYPE	PACKING
6900-2031	Large	Individual flow-pack, 100 pcs/carton
6900-2021	Middle	
6900-2011	Small	Individual peel-pack, 100 pcs/carton
6900-2032	Large	
6900-2022	Middle	
6900-2012	Small	



- FRENCH TYPE

P/N	TYPE	PACKING
6900-3031	Large	Individual flow-pack, 100 pcs/carton
6900-3021	Middle	
6900-3011	Small	
6900-3001	Extra small	Individual peel-pack, 100 pcs/carton
6900-3032	Large	
6900-3022	Middle	
6900-3012	Small	
6900-3002	Extra small	



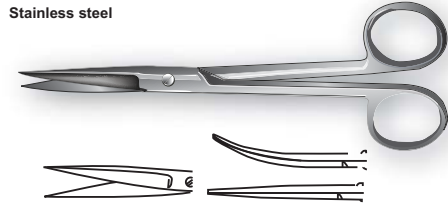
- SPANISH SCREW

P/N	TYPE	PACKING
6900-4031	Large	Individual flow-pack, 100 pcs/carton
6900-4021	Middle	
6900-4011	Small	Individual peel-pack, 100 pcs/carton
6900-4032	Large	
6900-4022	Middle	
6900-4012	Small	



DISSECTING SCISSORS

10pcs / pack, 50pcs/ carton

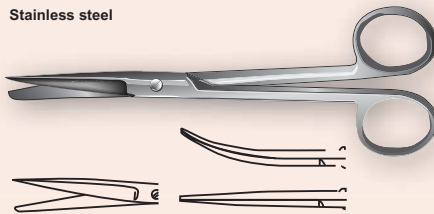


- SHARP/SHARP POINTS

P/N	TIP TYPE	LENGTH(mm)
0311-1125	Straight	125
0311-1140	Straight	140
0311-1160	Straight	160
0311-1180	Straight	180
0311-2125	Curved	125
0311-2140	Curved	140
0311-2160	Curved	160
0311-2180	Curved	180

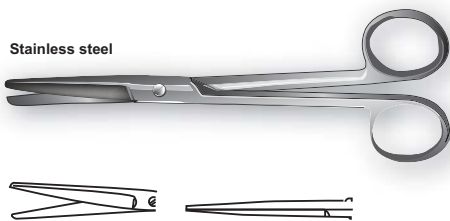
- SHARP/BLUNT POINTS

P/N	TIP TYPE	LENGTH(mm)
0312-1125	Straight	125
0312-1140	Straight	140
0312-1160	Straight	160
0312-1180	Straight	180
0312-2125	Curved	125
0312-2140	Curved	140
0312-2160	Curved	160
0312-2180	Curved	180



- BLUNT/BLUNT POINTS

P/N	TIP TYPE	LENGTH(mm)
0313-1125	Straight	125
0313-1140	Straight	140
0313-1160	Straight	160
0313-1180	Straight	180
0313-2125	Curved	125
0313-2140	Curved	140
0313-2160	Curved	160
0313-2180	Curved	180



FORCEPS

12pcs / pack, 60pcs/ carton

- DISSECTING FORCEPS

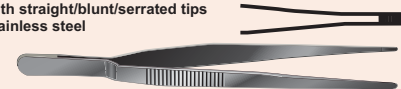
With straight/fine tips, polished
Stainless steel



P/N	LENGTH(mm)
0301-1125	125
0301-1140	140
0301-1160	160
0301-1180	180
0301-1200	200
0301-1250	250

- SPECIMEN FORCEPS

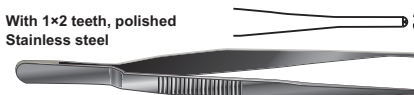
With straight/blunt/serrated tips
Stainless steel



P/N	LENGTH(mm)
0303-1125	125
0303-1140	140
0303-1160	160
0303-1180	180
0303-1200	200
0303-1250	250

- TISSUE FORCEPS

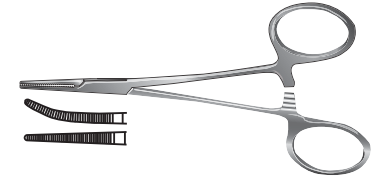
With 1x2 teeth, polished
Stainless steel



P/N	LENGTH(mm)
0302-1125	125
0302-1140	140
0302-1160	160
0302-1180	180
0302-1200	200
0302-1250	250

- HEMOSTATIC FORCEPS

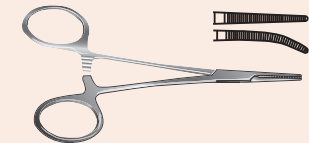
Halsted-mosquito type, serrated at the tips, Stainless steel



P/N	TIP TYPE	LENGTH(mm)
0321-1125	Straight	125
0321-2125	Curved	125

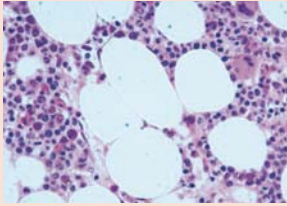
- ARTERY FORCEPS

Serrated at the tips, stainless steel

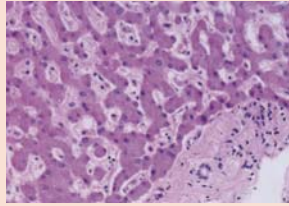


P/N	TIP TYPE	LENGTH(mm)
0321-1140	Straight	140
0321-1160	Straight	160
0321-1180	Straight	180
0321-1200	Straight	200
0321-2140	Curved	140
0321-2160	Curved	160
0321-2180	Curved	180
0321-2200	Curved	200

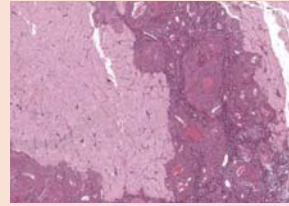
STAIN SOLUTION



Bone marrow FineFIX, H&E x 400



Liver, FineFIX, H&E x 400



Ovarian carcinoma, FineFIX, H&E x 400

HARRIS HEMATOXYLIN

P/N	PACKING
0400-0001	500ml/bottle/box, 15boxes/carton
0400-0002	2000ml/bottle/box, 6boxes/carton

EOSIN Y AQUEOUS SOLUTION

P/N	PACKING
0400-0011	500ml/bottle/box, 15boxes/carton
0400-0012	2000ml/bottle/box, 6boxes/carton

GILL'S HEMALUM

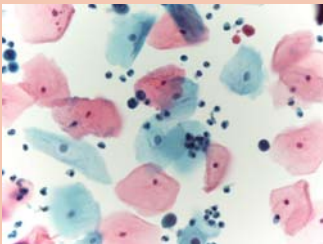
P/N	PACKING
0400-0015	500ml/bottle/box, 15boxes/carton
0400-0016	2000ml/bottle/box, 6boxes/carton

MAYER'S HEMALUM

P/N	PACKING
0400-0017	500ml/bottle/box, 15boxes/carton
0400-0018	2000ml/bottle/box, 6boxes/carton

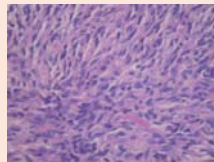
PAPANICOLAOU EA50

P/ N	PACKING
0400-0042	250ml/bottle, 3 bottles/box 15 bottles/carton
0400-0043	500ml/bottle, 3 bottles/box 15 bottles/carton
0400-0044	2000ml/bottle, 3 bottles/box 15 bottles/carton

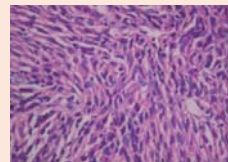


FINEFIX FIXATIVES

FineFIX is a formalin-free, water-based concentrate. When diluted with ethanol, its patented formulation of low toxicity additives overcomes the drawbacks commonly associated with the use of pure ethanol or ethanol based fixatives, e.g., significant tissue shrinkage, vacuolization and pyknotic nuclei. FineFIX also provides optimal preservation of tissue antigens, nuclear and cytoplasmic morphology and reduced lysis of red blood cells with preservation of the cytoplasmic membranes. The ethanol concentration in the working solution of FineFIX is approximately 70%. This concentration was found to produce good histology and to allow optimal recovery of DNA/RNA and proteins, sufficient for several downstream molecular analyses.



Formalin: H&E



FineFIX: H&E

P/N	PACKING
0011-0009	2 L/bottle, 6 bottles/carton
0011-0010	5 L/bottle, 2 bottles/carton
0011-0011	10 L/bottle



Microbiology